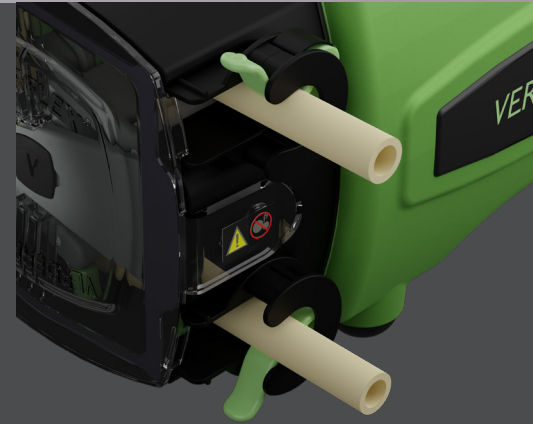


Verderprene

- ✓ Long-life tubing
- ✓ Chemically compatible with many media
- ✓ Great temperature range



Everyday, general use tubing

The standard choice for use in peristaltic pumps, Verderprene can be used in a wide selection of peristaltic pump applications. It's wide chemical resistance and excellent strength against oxidising agents such as ozone, peroxides and hypochlorides, makes it the all-rounder of peristaltic tubing.

Verderprene is designed for use in non fatty food contact applications. It is recommended for applications requiring excellent flex fatigue resistance. Verderprene has a wide chemical resistance and excellent mechanical strength.

Excellent mechanical strength

This material exhibits outstanding mechanical strength, ensuring durability even in the most demanding environments. Whether faced with abrasive substances or rigorous operational conditions, Verderprene tubing stands its ground, providing reliable, performance and longevity. This tubing exceeds the standards for mechanical strength, making it a trusted choice for industries where durability is non-negotiable.

Features and Benefits

- Excellent mechanical strength
- Temp. range: +10°C to + 85°C
- Wide chemical resistance
- Excellent strength against oxidising agents
- Can be autoclaved
- Compatible with most CIP and SIP solutions

Compliance

- FDA
- NSF 51
- RoHs



Verderprene

Part Number	Tube ID [mm]	Wall Thickness [mm]	Description	Quantity/box [m]
150.0603.15	1,6	1,6	15m Roll Verderprene 1.6 ID X 1.6 WT	15
150.0620.15	3,2		15m Roll Verderprene 3.2 ID X 1.6 WT	15
150.0643.15	4,0		15m Roll Verderprene 4.0 ID X 1.6 WT	15
150.0604.15	4,8		15m Roll Verderprene 4.8 ID X 1.6 WT	15
150.0605.15	6,4		15m Roll Verderprene 6.4 ID X 1.6 WT	15
150.0606.15	8,0		15m Roll Verderprene 8.0 ID X 1.6 WT	15
150.0644.15	3,2	2,4	15m Roll Verderprene 3.2 ID X 2.4 WT	15
150.0625.15	4,8		15m Roll Verderprene 4.8 ID X 2.4 WT	15
150.0623.15	6,4		15m Roll Verderprene 6.4 ID X 2.4 WT	15
150.0626.15	8,0		15m Roll Verderprene 8.0 ID X 2.4 WT	15
150.0627.15	9,6		15m Roll Verderprene 9.6 ID X 2.4 WT	15
150.0616.15	6,4		15m Roll Verderprene 6.4 ID X 3.2 WT	15
150.0651.15	8,0	3,2	15m Roll Verderprene 8.0 ID X 3.2 WT	15
150.0617.15	9,6		15m Roll Verderprene 9.6 ID X 3.2 WT	15
150.0611.15	12,7		15m Roll Verderprene 12.7 ID X 3.2 WT	15
150.0612.15	15,9	4,8	15m Roll Verderprene 15.9 ID X 3.2 WT	15
150.0635.15	15,9		15m Roll Verderprene 15.9 ID X 4.8 WT	15
150.0618.15	19,0		15m Roll Verderprene 19.0 ID X 4.8 WT	15
150.0619.15	25,4		15m Roll Verderprene 25.4 ID X 4.8 WT	15

Typical physical properties

Property	Tested on	Value or Rating
Hardness Shore A (15 secs)	ISO 868	69
Colour		Natural/Beige
Colour coding (on box)		Blue
Specific gravity	ASTM D792	0.950
Compression set %	ASTM D395B	32
Elongation at break %	ASTM D412	470
Tensile strength at 100% (23c)	ASTM D412	392 psi
Operating temperature °C (°F)		+10 to +85 (+50 to +185)
Density (g/cm³)	ISO 1183	0.950

Unless otherwise noted, all tests were conducted at room temperature 73°F (23°C). Values shown were determined on 0.075 in (1.905 mm) thick extruded strip or 0.075 in (1.905 mm) thick molded ASTM plaques or molded ASTM durometer buttons. Size of tubing tested is 1/8 in ID x 1/4 in OD.

Many factors will reduce the tubing's ability to withstand pressure, including temperature, chemical attack, stress, pulsation and the attachment to fittings. It is imperative that the user conduct tests.



23-VF-DA_Verderprene-Tubing_TechLeaflet-uk(en)